

Florina<sup>®</sup>  
CERAMICS



@FlorinaCeramics



www.florina.cn | info@florina.cn | 400-999-9394

TechnoStone





# TECHNOSTONE

IT IS A MASTERPIECE OF THE INTERWEAVING OF NATURE AND HUMAN WISDOM, WITH EACH TILE CARRYING THE BEAUTY OF NATURE AND BRINGING UNIQUE CHARM TO THE SPACE.

IN THE WORLD OF CERAMIC TILES, THE TIANGONGSHI CERAMIC TILE SERIES IS LIKE A SHINING STAR. ITS BIRTH STEMS FROM A PROFOUND UNDERSTANDING OF THE BEAUTY OF NATURE. DESIGNERS SEARCH FOR INSPIRATION AMONG MOUNTAINS, RIVERS, LAKES, SEAS, AND STRANGE PEAKS AND ROCKS, YEARNING TO PRESERVE THE INTRICATE TEXTURES AND TEXTURES OF NATURE, THE TIANGONGSHI CERAMIC TILE SERIES HAS SIGNIFICANT ADVANTAGES. IT HAS ULTRA-HIGH HARDNESS, WEAR RESISTANCE, AND CAN EASILY COPE WITH DAILY FRICTION AND IMPACT, AND REMAINS AS SMOOTH AS NEW EVEN AFTER LONG-TERM USE. ITS ANTI FOULING PERFORMANCE IS EXCELLENT, AND STAINS ARE DIFFICULT TO ADHERE TO. CLEANING ONLY REQUIRES GENTLE WIPING. AND THE COLOR IS LONG-LASTING, WILL NOT FADE OVER TIME, AND ALWAYS REMAINS BRIGHT. WATERPROOF PERFORMANCE IS EVEN BETTER, EFFECTIVELY PREVENTING MOISTURE INFILTRATION AND PROTECTING WALLS AND FLOORS. CRAFTSMEN USE EXQUISITE SKILLS AS PENS AND ADVANCED TECHNIQUES AS INK TO SIMULATE THE TRACES OF NATURAL STONE CARVING OVER TIME. THE ELEMENTS EXTRACTED FROM DEEP MOUNTAINS HAVE UNDERGONE COUNTLESS EXPERIMENTS AND IMPROVEMENTS, ULTIMATELY CREATING THE TIANGONGSHI CERAMIC TILE SERIES.

# TORRECID (SPAIN)



-  SCULPIN TECHNOLOGY
-  MODEUP TECHNOLOGY

POWERED BY  TORRECID

**ADHESIVE:** SPECIAL CERAMIC TILE ADHESIVE IS GENERALLY USED, WHICH HAS GOOD BONDING AND ADAPTABILITY, AND CAN FIRMLY BOND WITH THE CERAMIC TILE BODY AND DRY PARTICLES. THE VISCOSITY AND OTHER PERFORMANCE PARAMETERS NEED TO BE SELECTED ACCORDING TO SPECIFIC PRODUCTION REQUIREMENTS AND EQUIPMENT. FOR EXAMPLE, SOME PROCESSES MAY USE ADHESIVES WITH A VISCOSITY OF 20-25PA · S.

**DRY GRANULES:** DRY GRANULES ARE SMALL PARTICLES OBTAINED BY A SERIES OF PROCESSES SUCH AS HIGH-TEMPERATURE MELTING, WATER QUENCHING, AND SCREENING OF VARIOUS MINERAL MATERIALS. COMMON RAW MATERIALS INCLUDE QUARTZ, POTASSIUM FELDSPAR, CALCITE, DOLOMITE, TALC, SPODUMENE, ALUMINA, BARIUM CARBONATE, POTASSIUM CARBONATE, ZIRCONIUM SILICATE, BORAX, MARBLE, ZINC OXIDE, ETC. THE PROPORTION AND PARTICLE SIZE OF THESE MATERIALS WILL AFFECT THE PERFORMANCE OF DRY PARTICLES AND THE FINAL DECORATIVE EFFECT.

**CERAMIC TILE PRETREATMENT:** FIRSTLY, IT IS NECESSARY TO ENSURE THAT THE SURFACE OF THE CERAMIC TILE BODY IS CLEAN, FLAT, AND FREE OF IMPURITIES SUCH AS DUST AND OIL STAINS. THE SURFACE OF THE GLAZED LAYER OF SEMI-FINISHED CERAMIC TILES CAN BE CLEANED AND THE WATER STAINS ON THE SURFACE CAN BE DRIED TO PREPARE FOR SUBSEQUENT GLUE SPRAYING AND DRY PARTICLE BONDING.

**SPRAY GLUE:** USE A DIGITAL INKJET PRINTER TO EVENLY SPRAY GLUE ONTO THE SURFACE OF CERAMIC TILES, FORMING SPECIFIC PATTERNS OR TEXTURES. DIGITAL INKJET TECHNOLOGY CAN ACCURATELY CONTROL THE AMOUNT AND POSITION OF GLUE SPRAYING, ENSURING THE ACCURACY AND CONSISTENCY OF GLUE PATTERNS. THE THICKNESS OF THE SPRAYED GLUE IS GENERALLY CONTROLLED AT AROUND 1-2MM.

**ADHESIVE DRY PARTICLES:** QUICKLY AND EVENLY SPRINKLE THE DRY PARTICLES ON THE SURFACE OF THE CERAMIC TILE BEFORE THE ADHESIVE IS DRY. DRY PARTICLES WILL ADHERE TO CERAMIC TILES UNDER THE BONDING EFFECT OF GLUE, FORMING THE DESIRED DECORATIVE EFFECT. DRY GRANULE MACHINES AND OTHER EQUIPMENT CAN BE USED FOR THE DISTRIBUTION OF DRY GRANULES TO ENSURE UNIFORM DISTRIBUTION.





PD32

Atlantic Grey





**Atlantic Grey**

-

**PD32**

900 x 1800 x 10 mm  
36" x 12" x 0.4"







PD33

Atlantic Marrone



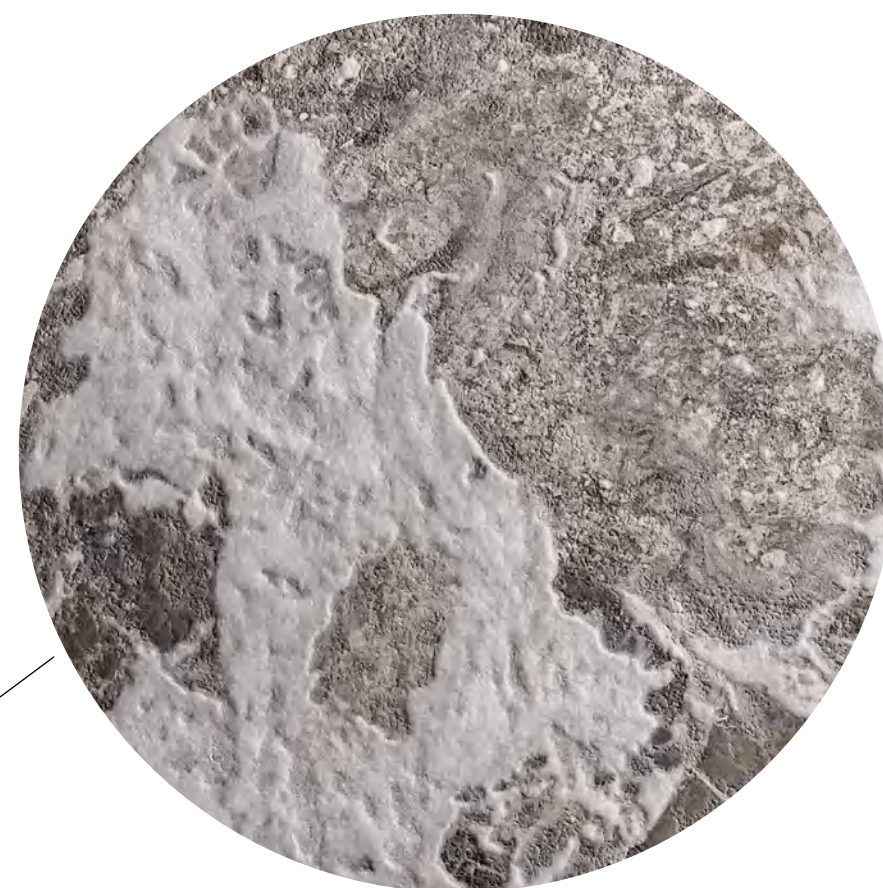


**Atlantic Marrone**

-

**PD33**

900 x 1800 x 10 mm  
36" x 12" x 0.4"



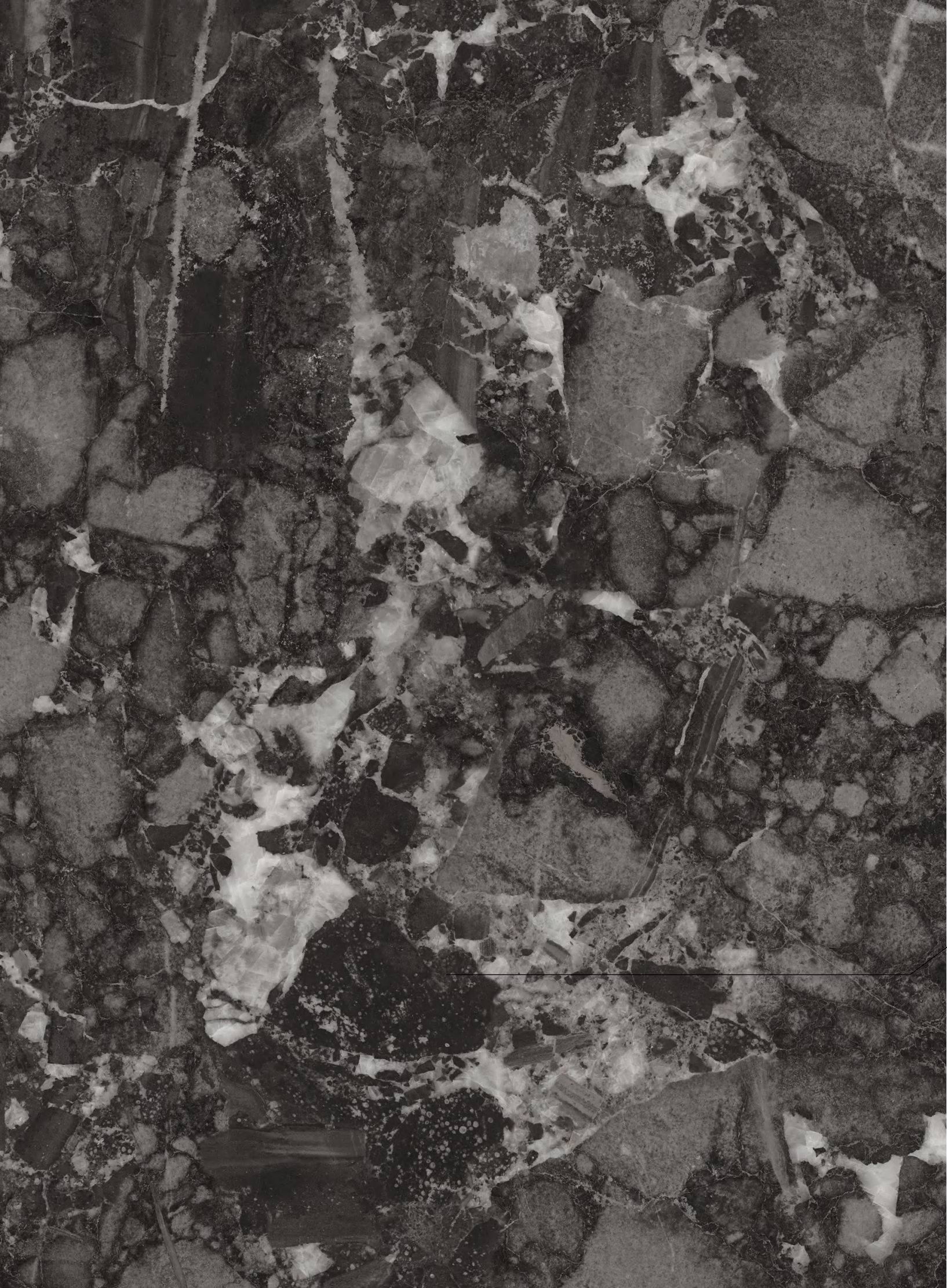


MD35

Nero Breccia





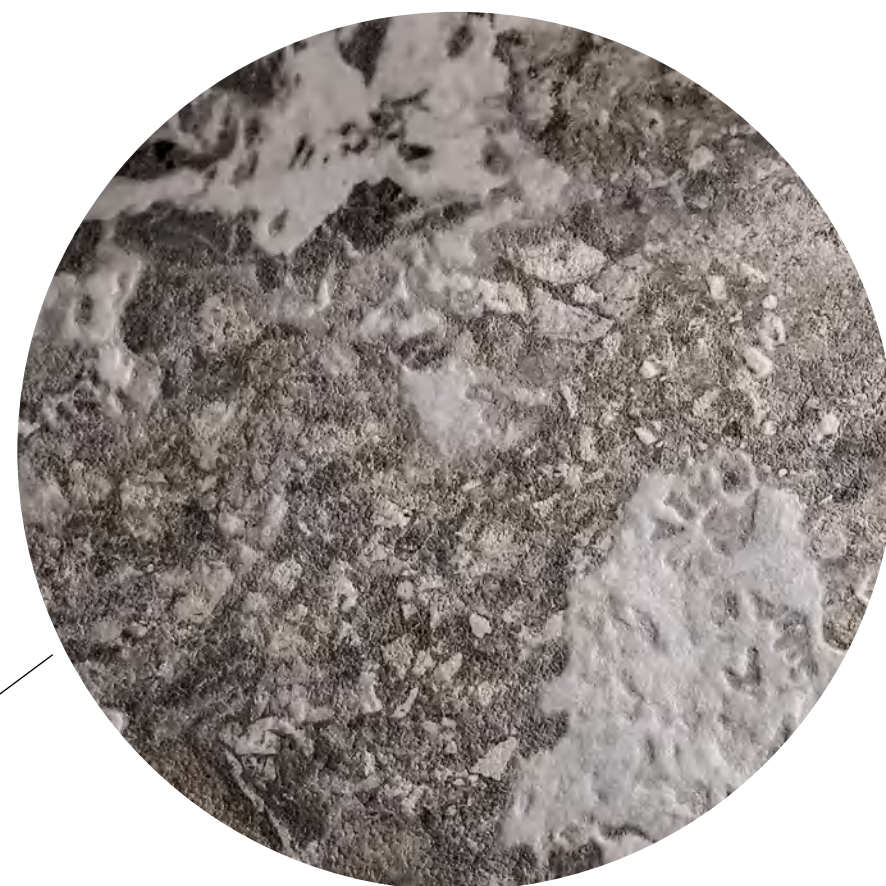


**Nero Breccia**

-

**MD35**

900 x 1800 x 10 mm  
36" x 12" x 0.4"







PD63

Quarzite Velvet



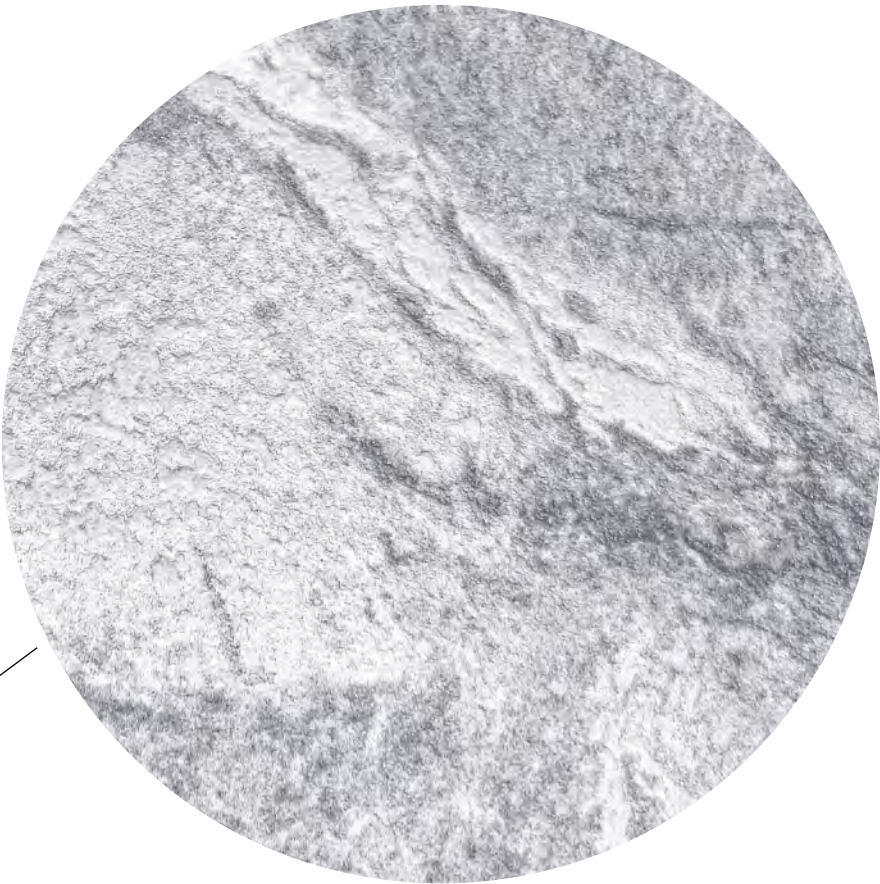


Quartzite Velvet

-

PD63

900 x 1800 x 10 mm  
36" x 12" x 0.4"







PD64

Quarzite Navy



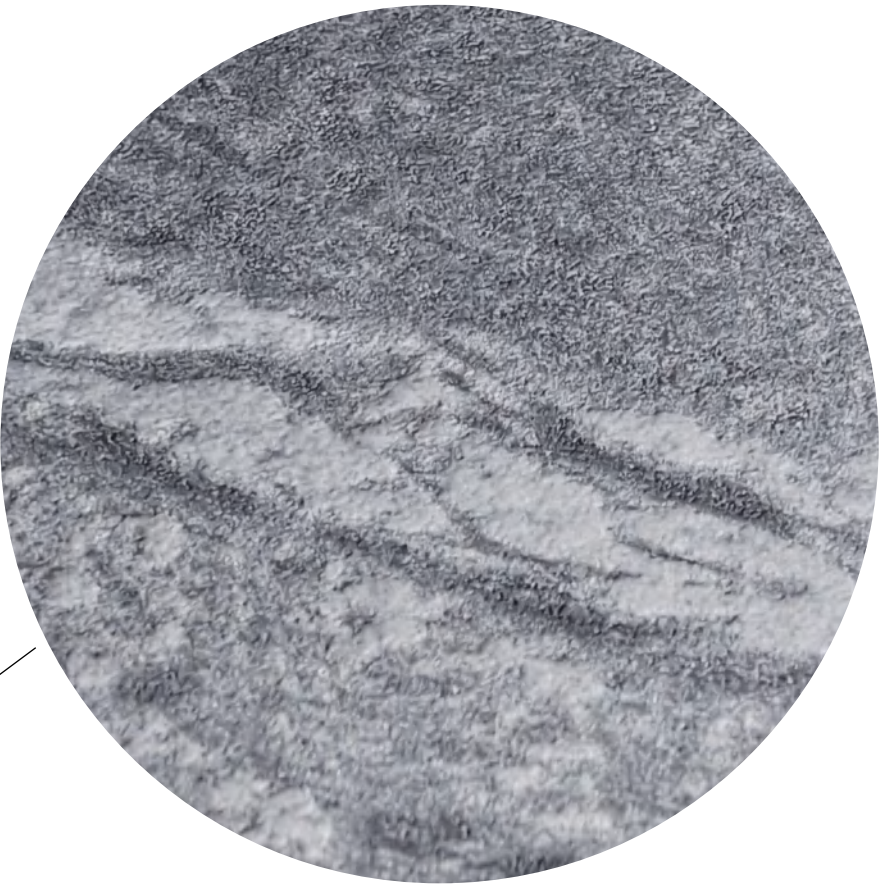


Quarzite Navy

-

PD64

900 x 1800 x 10 mm  
36" x 12" x 0.4"







PD61

Borgogna Light





**Borgogna Light**

-

**PD61**

900 x 1800 x 10 mm  
36" x 12" x 0.4"







PD62

Borgogna Origin





**Borgogna Origin**

-

**PD62**

900 x 1800 x 10 mm  
36" x 12" x 0.4"





PD59

Basatina Light

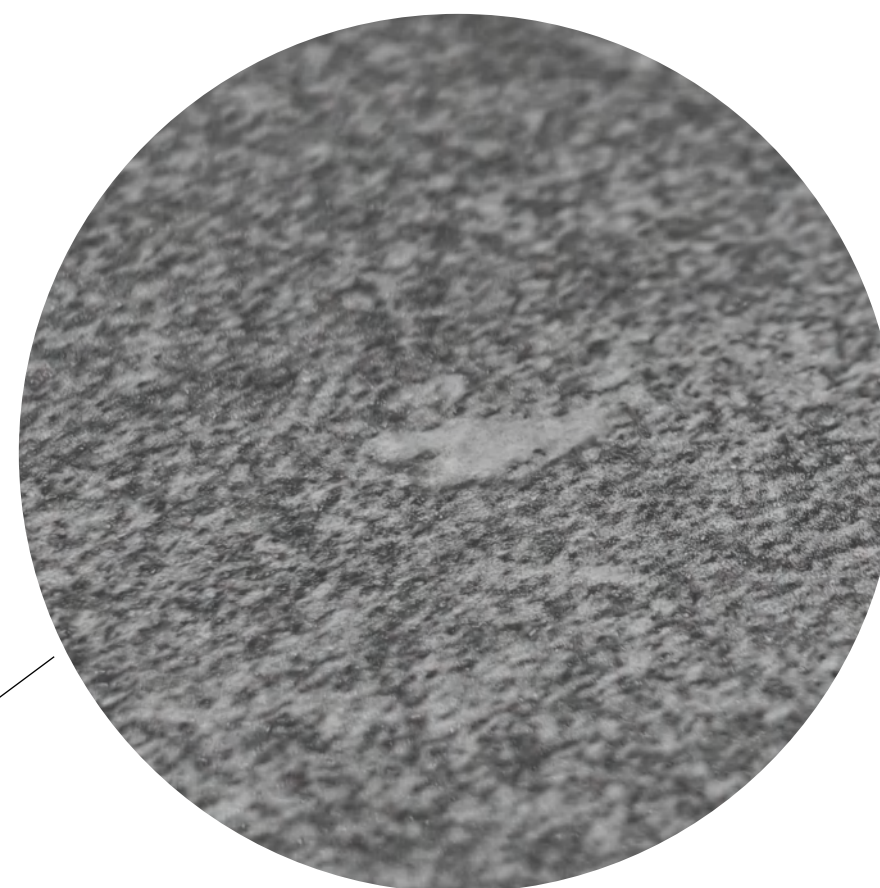




## Basatina Light

-  
PD59

900 x 1800 x 10 mm  
36" x 12" x 0.4"







PD60

Basatina Bianco

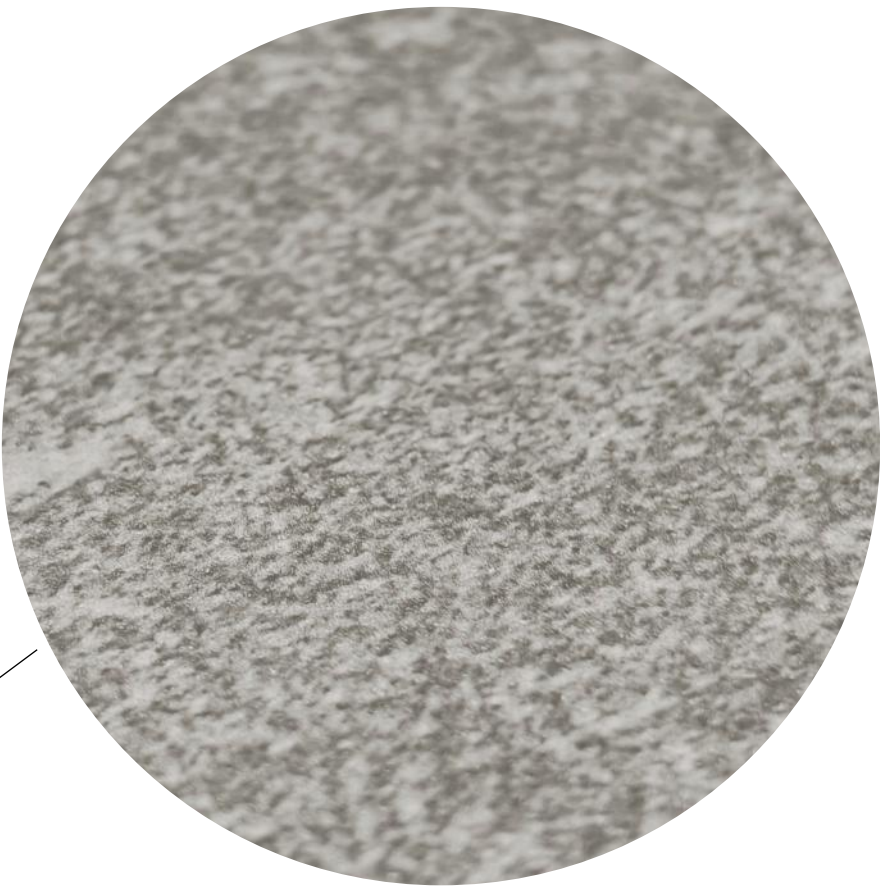


Basatina Bianco

-

PD60

900 x 1800 x 10 mm  
36" x 12" x 0.4"







MD4

Pietra Grey Light



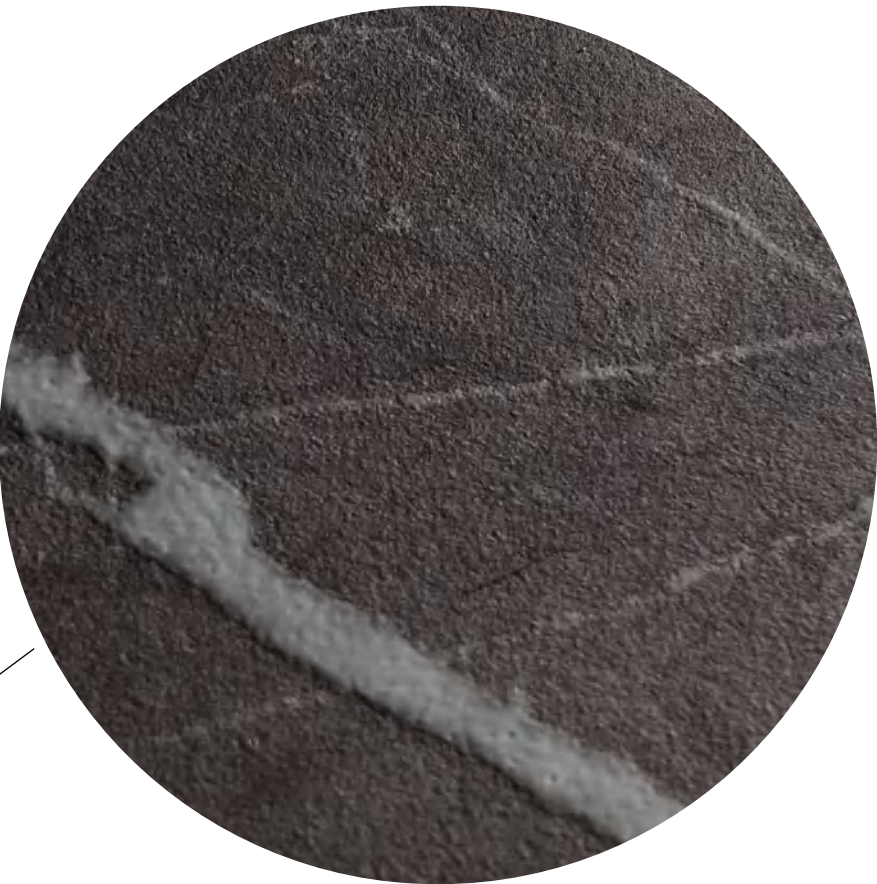


Pietra Grey Light

-

MD4

900 x 1800 x 10 mm  
36" x 12" x 0.4"





# TECHNOSTONE

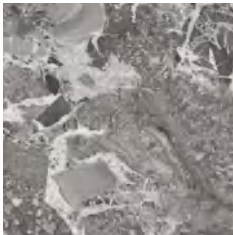
900x1800mm / 36"x72"



PD63 / Quarzite Velvet



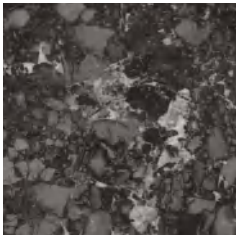
PD64 / Quarzite Navy



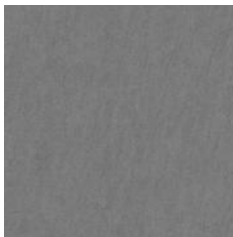
PD32 / Atlantic Grey



PD33 / Atlantic Marrone



MD35 / Nero Breccia



PD59 / Basatina Light



PD60 / Basatina Bianco



MD4 / Pietra Grey Light











600x1200mm / 24"x48" | 900x1800mm / 36"x72"



PD61 / Borgogna Light



PD62 / Borgogna Origin

PHYSICAL-CHEMICAL PROPERTIES		STANDARD OF TEST	REQUIRED VALUE	STANDARD OF TEST	INDUSTRY STANDARDS	
	Sizes	ISO 10545.2	Length and width	ASTM C-499	Average facial dimension<1,5%	0,%
			Thickness		Wedging±1%	0,014%
			Linearity			-
			Wedging		Warpage±1% of any edge	0,33%
			Warpage		Range of thickness(inch.)<0,04%	0,17%
	Water absorption	ISO 10545.3	≤0,5%	ASTM C-373	Tile shall be impervious	<0,08%
	Flexural	ISO 10545.4	Breaking modulus			47N/mm²
	Deep abrasion resistance	ISO 10545.7	Volume ≤175mm³	ASTM C-501	≥100	PIE4/2100
	Coefficient of linear thermal-expansion	ISO 10545.8	≤6.2x10⁻⁴°C	ASTM C-1028		Meets or exceeds requirements (Please ask for individual test reports)
	Frost resistance	ISO 10545.12	Must not produce noticeable alteration to surface	ASTM C-1026	No sample must showalterations to surface	Resistant
	Chemical resistance	ISO 10545.13		ASTM C-650		A LA HA
	Stain resistance	ISO 10545.14		ASTM C-648	250 PSI or greater	
	Color resistance to light	DIN 51094	Must not produce noticeable colour variation			
	Friction coefficient	DIN 51130	Test method available			R10

	Fire resistance		96/603/CE			A1
---	-----------------	--	-----------	--	--	----